

AS

FLONTING FASTENERS

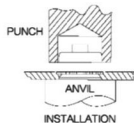


Non-locking

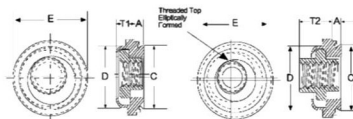
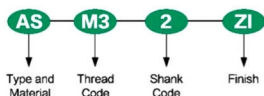


Self-locking

A=Non-locking
LA=Self-locking
S=Heat-treated carbon steel
C=300 series stainless steel
AS-ZL LAS-MD
AC=None LAC-MD



Part Number Designation



All dimensions are in inches (Size Unit: inch)

Thread Size	Type		Type		Thread Code	Shank Code	A (shank) MAX.	Rec Min. Sheet Thickness	Hole size in Sheet +0.003	C MAX.	D MAX.	E ± .015	T1 MAX.	T2 MAX.	Min. dist Hole C/L To Edge
	Non-locking Steel	Stainless Steel	Self-locking Steel	Stainless Steel											
.112-.40 (#4-40)	AS	AC	LAS	LAC	440	1	.038	.040	.290	.289	.290	.36	.13	.19	.30
						2	.054	.056							
.138-.32 (#6-32)	AS	AC	LAS	LAC	632	1	.038	.040	.328	.327	.335	.39	.13	.20	.32
						2	.054	.056							
.164-.32 (#8-32)	AS	AC	LAS	LAC	832	1	.038	.040	.368	.367	.365	.44	.13	.21	.34
						2	.054	.056							
.190-.24 (#10-24)	AS	AC	LAS	LAC	024	1	.038	.040	.406	.405	.405	.47	.17	.27	.36
						2	.054	.056							
.190-.32 (#10-32)	AS	AC	LAS	LAC	032	1	.038	.040	.406	.405	.405	.47	.17	.27	.36
						2	.054	.056							
.250-.20 (1/4-20)	AS	AC	LAS	LAC	0420	2	.054	.056	.515	.514	.510	.60	.21	.31	.42
.250-.28 (1/4-28)	AS	AC	LAS	LAC	0428	2	.054	.056	.515	.514	.510	.60	.21	.31	.42

All dimensions are in millimeters (Size Unit: mm)

Thread Size	Type		Type		Thread Code	Shank Code	A (shank) MAX.	Rec Min. Sheet Thickness	Hole size in Sheet +0.08	C MAX.	D MAX.	E ± .04	T1 MAX.	T2 MAX.	Min. dist Hole C/L To Edge
	Non-locking Steel	Stainless Steel	Self-locking Steel	Stainless Steel											
M3X0.5	AS	AC	LAS	LAC	M3	1	0.97	1	7.37	7.35	7.37	9.14	3.31	4.83	7.62
						2	1.38	1.4							
M4X0.7	AS	AC	LAS	LAC	M4	1	0.97	1	9.35	9.33	9.28	11.18	3.31	5.34	8.64
						2	1.38	1.4							
M5X0.8	AS	AC	LAS	LAC	M5	1	0.97	1	10.31	10.29	10.29	11.94	4.32	6.86	9.14
						2	1.38	1.4							
M6X1	AS	AC	LAS	LAC	M6	2	1.38	1.4	13.08	13.06	12.96	15.24	5.34	7.88	10.67