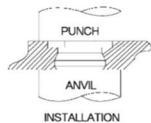
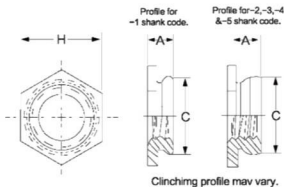
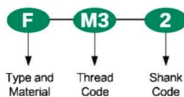


F

FLUSH FASTENERS



Part Number Designation



All dimensions are in millimeters(Size Unit:mm)

	Thread Size X PITCH	Type	Thread Code	Shank Code	A (shank) MAX.	Rec Min. Sheet Thickness	Hole size in Sheet +0.08	C MAX.	H Nom.	Min. Dist Hole C/L To Edge
METRIC	M2X0.4	F	M2	1	1.53	1.53-2.3	4.37	4.35	4.75	6
				2	2.3	2.32-UP				
	M2.5X0.45	F	M2.5	1	1.53	1.53-2.3	4.37	4.35	4.75	6
				2	2.3	2.32-UP				
	M3X0.5	F	M3	1	1.53	1.53-2.3	4.37	4.35	4.75	6
				2	2.3	2.32-UP				
M4X0.7	F	M4	1	1.53	1.53-2.3	7.37	7.35	8	7.2	
			2	2.3	2.32-UP					
M5X0.8	F	M5	1	1.53	1.53-2.3	7.92	7.9	8.7	8	
			2	2.3	2.32-UP					
M6X1	F	M6	3	3.05	3.18-3.94	8.74	8.72	9.5	8.8	
			4	3.84	3.96-4.72					
			5	4.63	4.75-UP					

All dimensions are in inches(Size Unit:inch)

	Thread Size X PITCH	Type	Thread Code	Shank Code	A (shank) MAX.	Rec Min. Sheet Thickness	Hole size in Sheet +0.003 -0.000	C MAX.	H Nom.	Min. Dist Hole C/L To Edge
UNIFIED	.086-56(#2-56)	F	256	1	.060	.060-090	.172	.171	.188	.23
				2	.090	.091-UP				
	.112-40(#4-40)	F	440	1	.060	.060-090	.172	.171	.188	.23
				2	.090	.091-UP				
	.138-32(#6-32)	F	632	1	.060	.060-090	.213	.212	.250	.27
				2	.090	.091-UP				
	.164-32(#8-32)	F	832	1	.060	.060-090	.290	.289	.312	.28
				2	.090	.091-UP				
	.190-32(#10-32)	F	032	1	.060	.060-090	.312	.311	.343	.31
				2	.090	.091-UP				
	.250-20(1/4-20)	F	0420	3	.120	.125-155	.344	.343	.375	.34
				4	.151	.156-186				
5				.182	.187-UP					