

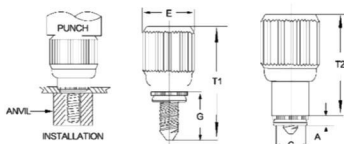
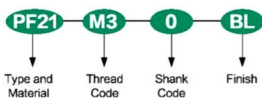
## PF21/PF22

## PANEL FASTENERS



Knob: Aluminum  
 Ferrule: Hardened carbon steel, zinc plate  
 Screw: 300 Series Stainless Steel  
 Spring: 300 Series Stainless Steel

## Part Number Designation



All dimensions are in millimeters (Size Unit: mm)

	Thread Size		Type	Thread Code		Shank Code	A ± 0.1	Min. Sheet Thickness	Hole size in Sheet +0.08	C MAX.	E ± 0.25	G ± 0.64	T1 ± 0.2	T2 Nom.	Driver Size
	Unified	Metric		Unified	Metric										
METRIC	.112-40 (#4-40)	M3X0.5	PF21	440	M3	0	0.97	1	5.55	5.53	10.5	4	12.3	11.5	#1
						1						5.7	14		
						2						7.2	15.5		
	.112-40 (#4-40)	M3X0.5	PF22	440	M3	0	1.47	1.5	5.55	5.53	10.5	4	12.3	11.5	#1
						1						5.7	14		
						2						7.2	15.5		
	.138-32 (#6-32)	M3.5X0.6	PF21	632	M3.5	0	0.97	1	6.35	6.33	11.5	5.3	16.4	15.9	#2
						1						6.9	18		
						2						8.5	19.6		
	.138-32 (#6-32)	M3.5X0.6	PF22	632	M3.5	0	1.47	1.5	6.35	6.33	11.5	5.3	16.4	15.9	#2
						1						6.9	18		
						2						8.5	19.6		
.164-32 (#8-32)	M4X0.7	PF21	832	M4	0	0.97	1	7.90	7.88	13	10.1	21.2	16.2	#2	
					1						5.6	16.9			
					2						7.2	18.5			
.164-32 (#8-32)	M4X0.7	PF22	832	M4	0	1.47	1.5	7.90	7.88	13	10.1	21.2	16.2	#2	
					1						5.6	16.9			
					2						7.2	18.5			
.190-32 (#10-32)	M5X0.8	PF21	032	M5	0	0.97	1	7.90	7.88	13	10.3	21.6	16.2	#2	
					1						7.2	18.5			
					2						8.7	20			
.190-32 (#10-32)	M5X0.8	PF22	032	M5	0	1.47	1.5	7.90	7.88	13	10.3	21.6	16.2	#2	
					1						7.2	18.5			
					2						8.7	20			
.250-20 (#14-20)	M6X1	PF21	0420	M6	0	0.97	1	9.5	9.47	14.7	7.1	20.5	20	#3	
					1						8.7	22.1			
					2						10.3	23.7			
.250-20 (#14-20)	M6X1	PF22	0420	M6	0	1.47	1.5	9.5	9.47	14.7	7.1	20.5	20	#3	
					1						8.7	22.1			
					2						10.3	23.7			