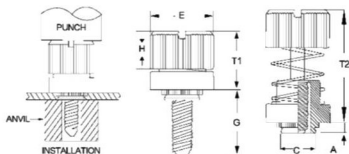
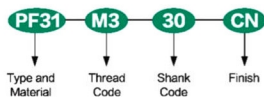


**PF31/PF32**

## PANEL FASTENERS



## Part Number Designation



All dimensions are in inches (Size Unit:inch)

	Thread Size	Type		Thread Code	Shank Code	A (Shank) Max.	Min. Sheet Thickness	Hole size In Sheet +.003	C MAX.	E ± .010	G ± .005	H ± .005	T1 Nom.	T2 Nom.	Min. Dist Hole C/L To Edge
		Steel	Stainless Steel												
UNIFIED	.112-.40 (#4-40)	PF30	PFS30	440	30	.030	.030	.203	.202	.403	.300	.202	.325	.595	.26
		PF31	PFS31			.038	.040								
		PF32	PFS32			.058	.060								
	.138-.32 (#6-32)	PF30	PFS30	632	30	.030	.030	.219	.218	.438	.300	.202	.325	.595	.28
		PF31	PFS31			.038	.040								
		PF32	PFS32			.058	.060								
	.164-.32 (#8-32)	PF30	PFS30	832	30	.030	.030	.250	.249	.468	.300	.207	.330	.600	.29
		PF31	PFS31			.038	.040								
		PF32	PFS32			.058	.060								
	.190-.32 (#10-32)	PF30	PFS30	032	30	.030	.030	.312	.311	.530	.300	.220	.335	.605	.33
		PF31	PFS31			.038	.040								
		PF32	PFS32			.058	.060								
.250-.20 (#14-20)	PF30	PFS30	0420	35	.058	.060	.375	.374	.625	.350	.242	.385	.675	.38	
	PF31	PFS31													
	PF32	PFS32													

All dimensions are in millimeters (Size Unit:mm)

	Thread Size	Type		Thread Code	Shank Code	A (Shank) Max.	Min. Sheet Thickness	Hole size In Sheet +0.08	C MAX.	E ± 0.25	G ± 0.4	H ± 0.13	T1 Nom.	T2 Nom.	Min. Dist Hole C/L To Edge
		Steel	Stainless Steel												
METRIC	M3X0.5	PF31	PFS31	M3	30	0.97	1	5.5	5.48	10.2	7.62	5.13	8.26	15.11	6.6
		PF32	PFS32			1.48	1.5								
	M3X0.5	PF31A	PFS31A	M3	30	0.97	1	6.0	5.97	10.2	7.62	5.13	8.26	15.11	6.6
		PF32A	PFS32A			1.48	1.5								
	M4X0.7	PF31	PFS31	M4	30	0.97	1	6.4	6.38	11.9	7.62	5.26	8.38	15.24	7.37
		PF32	PFS32			1.48	1.5								
M5X0.8	PF31	PFS31	M5	30	0.97	1	8	7.98	13.5	7.62	5.59	8.51	15.37	8.38	
	PF32	PFS32			1.48	1.5									
M6X1	PF32	PFS32	M6	35	1.48	1.5	9.5	9.48	15.9	8.89	6.12	9.78	17.15	9.65	