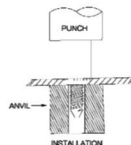
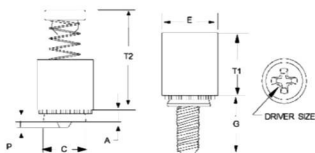
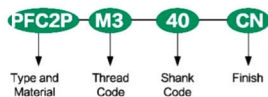


## PFC2P

## PANEL FASTENERS



## Part Number Designation



All dimensions are in inches (Size Unit:inch)

	Thread Size	Type	Thread Code	Shank Code	A (Shank) Max.	Min. Sheet Thickness	Hole size In Sheet +.003	C MAX.	E ± .016	G ± .016	P ± .025	T1 MAX.	T2 Nom.	Driver Size	Min. Dist Hole C/L To Edge
UNIFIED	.112-40 (#4-40)	PFC2P	440	40 62 40	.060	.060	.265	.264	.312	.250 .375 .125	.000 .375 .125	.370	.540	#1	.250
	.138-32 (#6-32)	PFC2P	632	62 84 84	.060	.060	.281	.280	.344	.375 .375 .125	.000 .300 .250	.380	.540	#2	.280
	.164-32 (#8-32)	PFC2P	832	80 72 94	.060	.060	.312	.311	.375	.312 .437 .125	.000 .562 .250	.480	.705	#2	.310
	.190-32 (#10-32)	PFC2P	032	50 72 94	.060	.060	.344	.343	.406	.312 .437 .125	.000 .562 .250	.490	.705	#2	.340
	.250-20 (#14-20)	PFC2P	0420	60 82 04	.060	.060	.413	.412	.468	.375 .500 .125	.000 .625 .250	.620	.905	#3	.380

All dimensions are in millimeters (Size Unit:mm)

	Thread Size	Type	Thread Code	Shank Code	A (Shank) Max.	Min. Sheet Thickness	Hole size In Sheet +0.08	C MAX.	E ± 0.25	G ± 0.4	P ± 0.64	T1 MAX.	T2 Nom.	Driver Size	Min. Dist Hole C/L To Edge
UNIFIED	M3X0.5	PFC2P	M3	40 62 50	1.53	1.53	6.73	6.71	7.92	6.4 9.5 3.2	0 7.9 0	9.4	13.72	#1	6.35
	M4X0.7	PFC2P	M4	72 84 50	1.53	1.53	7.92	7.9	9.53	11.1 14.3 6.4	3.2 14.3 6.4	12.19	17.91	#2	7.87
	M5X0.8	PFC2P	M5	72 94 60	1.53	1.53	8.74	8.72	10.31	11.1 14.3 6.4	3.2 14.3 6.4	12.45	17.91	#2	8.63
	M6X1	PFC2P	M6	82 94 04	1.53	1.53	10.49	10.47	11.89	12.7 15.9 6.4	3.2 15.9 6.4	15.75	22.99	#3	9.65