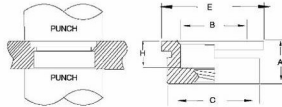
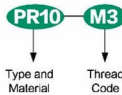


PR10

FLUSH - MOUNTED RETAINERS



Part Number Designation



All dimensions are in inches(Size Unit:inch)

	Thread Size	Type	Thread Code	A (Shank) Max.	Min. Sheet for Self Clinching	Min. Sheet for Flush Installation	Hole Size IN Sheet +.003-.000	B Nom.	C Max.	E Nom.	H Nom.	Min. Dist Hole C/L To Edge
UNIFIED	.112-40(#4-40)	PR10	440	.125	.050	.125	.281	.195	.280	.31	.075	.31
	.138-32(#6-32)	PR10	632	.125	.050	.125	.312	.225	.311	.34	.075	.33
	.164-32(#8-32)	PR10	832	.125	.050	.125	.344	.225	.343	.37	.075	.34
	.190-32(#10-32)	PR10	032	.125	.050	.125	.375	.290	.374	.41	.075	.36

All dimensions are in millimeters(Size Unit:mm)

	Thread Size	Type	Thread Code	A (Shank) Max.	Min. Sheet for Self Clinching	Min. Sheet for Flush Installation	Hole Size IN Sheet +0.08	B Nom.	C Max.	E Nom.	H Nom.	Min. Dist Hole C/L To Edge
METRIC	M3X0.5	PR10	M3	3.18	1.27	3.18	7.14	4.75	7.12	7.87	1.91	7.87
	M4X0.7	PR10	M4	3.18	1.27	3.18	8.74	6.48	8.72	9.53	1.91	8.64
	M5X0.8	PR10	M5	3.18	1.27	3.18	9.53	7.37	9.5	10.41	1.91	9.14