

### RAS

#### RIGHT ANGLE CLINCH FASTENERS

For use with standard metric or unfiled screws

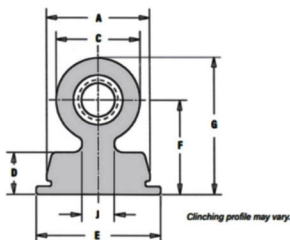
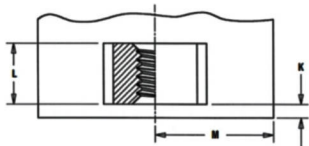


Metric part can be identified by flat top



#### PART NUMBER DESIGNATION

**RA**   **S**   **M4** - **9** - **7**   **ZI**  
 ↓   ↓   ↓   ↓   ↓   ↓  
 Type   Material   Thread Code   Height Code   Length Code   Finish Code



All dimensions are in millimeters.

METRIC	Thread Size x Pitch	Type	Fastener Material	Thread Code	Height Code	Length Code	Length L ±0.08	Min. Sheet Thickness	Hole Size in Sheet +0.05 -0.03	A ±0.08	C Nom.	D Nom.	E ±0.15	Height F ±0.15	G Nom.	J Nom.	Min. Part Face to Edge K	Min. Dist. Hole to Edge M
	M3 x 0.5	RA	S	M3	7	3	2.89	1	8 x 3	7.89	6.35	3.18	9.47	7	9.78	2.87	1.02	7.6
				4	3.89	8 x 4												
				6	5.89	8 x 6												
M4 x 0.7	RA	S	M4	9	4	3.89	1	10 x 4	9.89	8.89	3.18	11.48	9	13.21	4.06	1.02	14.7	
					7	6.89		10 x 7										
					9	8.89		10 x 9										