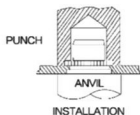


UL

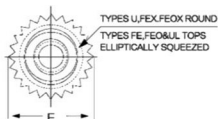
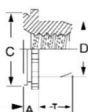
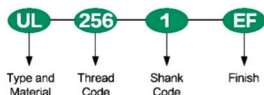
SELF - LOCKING FASTENERS



U=Non-locking  
UL=Locking  
FEOX=Non-locking,short shank  
FEX=Non-locking,long shank  
FEO=Self-locking,short shank  
FE=Self-locking,long shank



Part Number Designation



TYPES U,FEX,FEOX ROUND  
TYPES FE,FEO&UL TOPS  
ELLIPTICALLY SQUEEZED

All dimensions are in inches(Size Unit:inch)

	Thread Size	Type		Thread Code	Shank Code	A(shank) MAX.	Rec Min. Sheet Thickness	Hole size In Sheet +0.003	C +0.000 -0.005	D MAX.	E ± .005	T +0.15 -0.00	Min. Dist Hole C/L To Edge	Max. Hole In Attached Parts
		Non-locking	Self-locking											
UNFINISHED	.060-80 (#0-80)	U	UL	080	0	.020	.019-.022	.110	.1095	.076	.125	.050	.09	.080
	.073-64 (#1-64)	U	UL	164	0	.020	.019-.022	.110	.1095	.090	.125	.050	.09	.093
	.086-56 (#2-56)	U	UL	256	0	.020	.019-.022	.144	.1435	.106	.160	.065	.11	.106
	.112-40 (#4-40)	FEOX	FEO	440	4	.040	.039-.045	.172	.171	.145	.192	.065	.14	.132
	.138-32 (#6-32)	FEX	FE	632	4	.060	.059-.070	.213	.212	.180	.244	.075	.17	.158
	.164-32 (#8-32)	FEOX	FEO	832	4	.040	.039-.045	.290	.289	.215	.322	.090	.20	.184
	.190-32 (#10-32)	FEX	FE	032	4	.060	.059-.070	.290	.289	.245	.322	.110	.20	.210
	.114-20 (#14-20)	FEOX	FEO	0420	4	.060	.059-.070	.344	.343	.318	.384	.120	.28	.270
	.114-28	FEX	FE	0428	4	.060	.059-.070							

All dimensions are in millimeters(Size Unit:mm)

	Thread Size	Type		Thread Code	Shank Code	A(shank) MAX.	Rec Min. Sheet Thickness	Hole size In Sheet +0.08	C -0.13	D MAX.	E ± 0.13	T +0.4	Min. Dist Hole C/L To Edge	Max. Hole In Attached Parts
		Non-locking	Self-locking											
METRIC	M2X0.4	U	UL	M2	1	0.76	0.76-0.91	3.61	3.6	2.5	4.07	1.65	2.8	2.5
	M3X0.5	FEOX	FEO	M3	4	1.02	0.99-1.14	4.39	4.37	3.96	4.88	1.9	3.6	3.5
		FEX	FE				1.53	1.5-1.78						
	M4X0.7	FEOX	FEO	M4	4	1.02	0.99-1.14	7.39	7.37	5.23	8.17	2.55	5.2	4.5
		FEX	FE				1.53	1.5-1.78						
	M5X0.8	FEOX	FEO	M5	4	1.02	0.99-1.14	7.39	7.37	6.48	8.17	3.06	5.2	5.5
FEX		FE				1.53	1.5-1.78							
M6X1	FEX	FE	M6	4	1.53	1.5-1.78	8.74	8.72	7.72	9.74	3.3	7.1	6.5	