

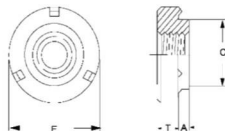
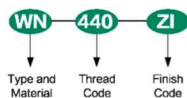
WN

PRESS - IN NUTS



Material: WN-Carbon Steel
WN: 300 Series Stainless Steel

Part Number Designation



All dimensions are in inches (Size Unit:inch)

	Thread Size X Pitcn	Type		Thread Code	A Max.	Min. Sheet Thickness	Hole size In Sheet + .003 - .000	C Max.	E -.01	T ± .004	Min. Dist Hole C/L To Edge
		Carbon Steel	Stainless Steel								
UNIFIED	.112-40(#4-40)	WN	WNS	440	.030	.030	.173	.172	.308	.063	.15
	.138-32(#6-32)	WN	WNS	632	.030	.030	.193	.192	.341	.094	.17
	.164-32(#8-32)	WN	WNS	832	.030	.030	.218	.217	.371	.108	.18
	.190-24(#10-24)	WN	WNS	024	.030	.030	.250	.249	.440	.156	.22
	.190-32(#10-32)	WN	WNS	032	.030	.030	.250	.249	.440	.156	.22
	.250-20(#1/4-20)	WN	WNS	0420	.048	.048	.316	.315	.522	.186	.26

All dimensions are in millimeters (Size Unit:mm)

	Thread Size X Pitcn	Type		Thread Code	A Max.	Min. Sheet Thickness	Hole size In Sheet +0.1	C Max.	E -0.25	T ± 0.1	Min. Dist Hole C/L To Edge
		Carbon Steel	Stainless Steel								
METRIC	M3X0.5	WN	WNS	M3	0.77	0.77	4.39	4.36	7.82	1.49	3.91
	M4X0.7	WN	WNS	M4	0.77	0.77	5.53	5.5	9.42	2.58	4.71
	M5X0.8	WN	WNS	M5	0.77	0.77	6.35	6.32	11.17	3.78	5.59
	M6X1	WN	WNS	M6	1.22	1.22	8.02	7.99	13.25	4.56	6.63